

NEW JERSEY DEPARTMENT OF EDUCATION (NJDOE) SCHOOL PERFORMANCE REPORTS

[Burch Charter School of Excellence]

[6PM – April 20, 2020]

[Dr. Jeff White, Chief School Administrator]



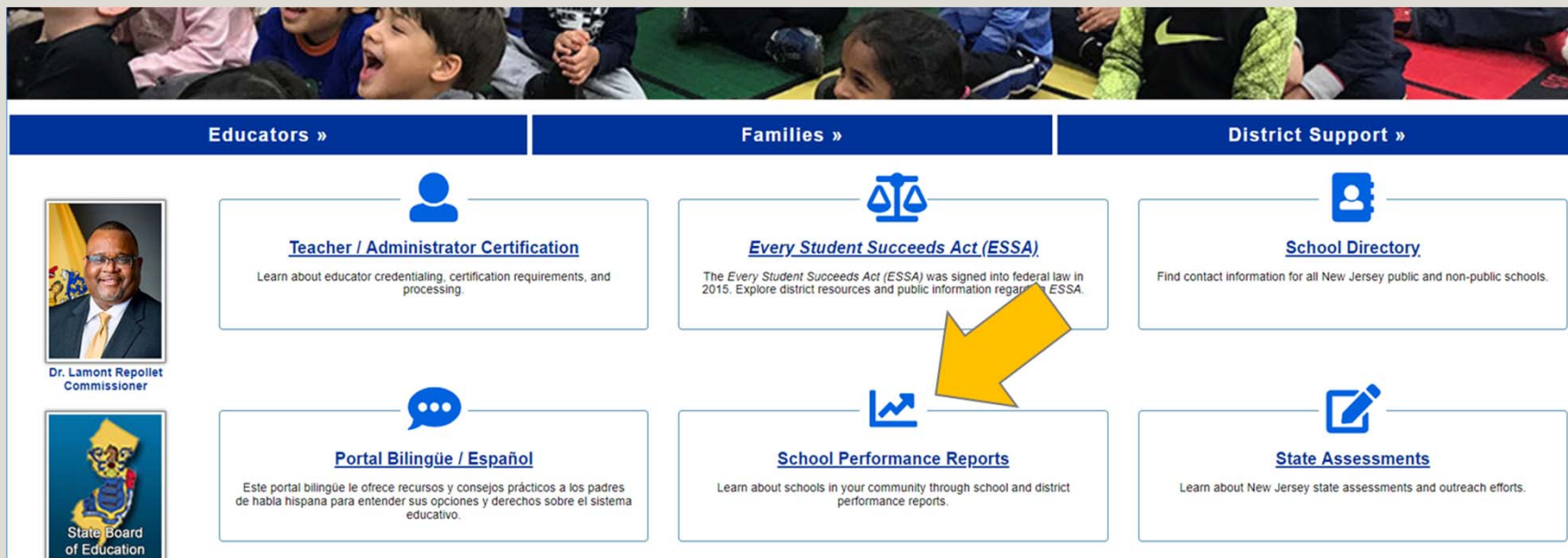


2018-19 School Performance Reports









- The **School Performance Reports** reflect the New Jersey Department of Education's commitment to providing parents, students, and school communities with a large variety of information about each school and district. These reports can be used as a tool to help evaluate whether all students have equitable access to high quality education.
- Communities are encouraged to use these reports to **learn more, start conversations, and engage.**
- In addition to meeting the federal report requirements under *ESSA*, NJDOE is committed to developing reports that **provide stakeholders with a broader picture of their schools and districts.**
- Along with the **detailed School Performance Reports** for each school, district, and state, **one-page Summary Reports** for each school and district are also available. The Summary Reports provide a high-level summary of how well a school or district is performing.
- The reports and resources are also translated into Spanish.

WHERE CAN YOU FIND THE PERFORMANCE REPORTS?

You can find the performance reports on the New Jersey Department of Education homepage, www.nj.gov/education. Use the "School Performance Reports" link in the center of the page.



The screenshot shows the navigation menu of the New Jersey Department of Education website. It is organized into three columns: Educators, Families, and District Support. A yellow arrow points to the 'School Performance Reports' link in the Families column.

Educators »	Families »	District Support »
 <p>Dr. Lamont Repollet Commissioner</p>  <p>State Board of Education</p>	<p> <u>Teacher / Administrator Certification</u> Learn about educator credentialing, certification requirements, and processing.</p> <p> <u>Every Student Succeeds Act (ESSA)</u> The <i>Every Student Succeeds Act (ESSA)</i> was signed into federal law in 2015. Explore district resources and public information regarding ESSA.</p> <p> <u>Portal Bilingüe / Español</u> Este portal bilingüe le ofrece recursos y consejos prácticos a los padres de habla hispana para entender sus opciones y derechos sobre el sistema educativo.</p> <p> <u>School Performance Reports</u> Learn about schools in your community through school and district performance reports.</p>	<p> <u>School Directory</u> Find contact information for all New Jersey public and non-public schools.</p> <p> <u>State Assessments</u> Learn about New Jersey state assessments and outreach efforts.</p>

SCHOOL PERFORMANCE REPORTS HOMEPAGE

You can also go directly to the School Performance Reports homepage,

www.nischooldata.org.

NJ SCHOOL PERFORMANCE REPORT

New Jersey School Performance Reports

The School Performance Reports reflect the NJDOE's extensive efforts to engage with parents, students, and school communities and share the information that is most valuable in providing a picture of overall school performance. Communities are encouraged to use these reports to **learn more, start conversations, and engage.**

Search for a school or district below to get started.

Select School Year: 2017-18 [View report data prior to 2011-2012](#)

Select Report Type: School District State

Select Search Type: School/District/County Dropdown School Name Zip Code

County:

District:

School:

Search for Reports

[View an alphabetical list of all schools](#)

Performance Reports Home Page

Resource Documents

Reference Guide

Summary Report Guide

Frequently Asked Questions

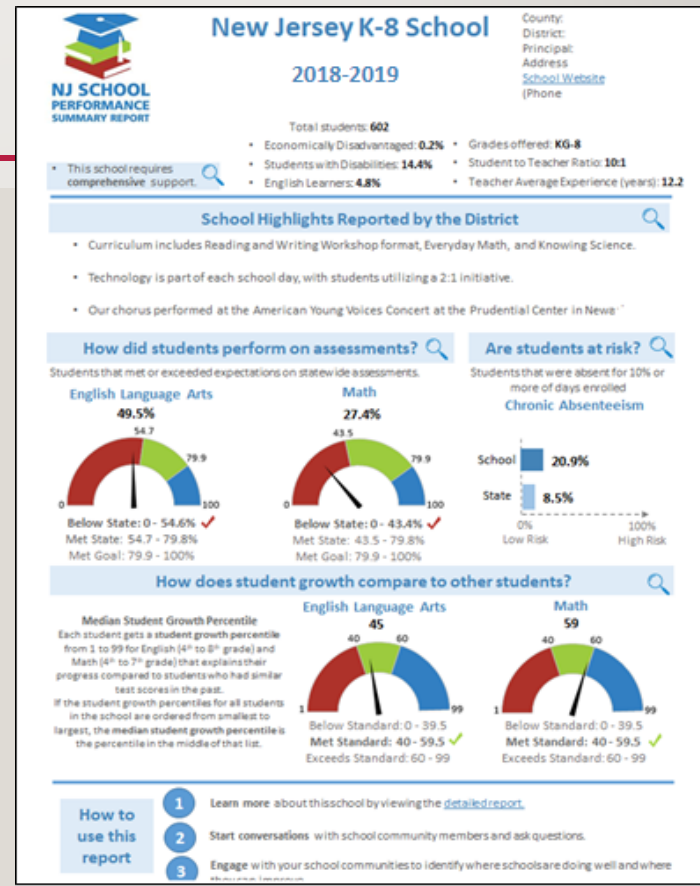
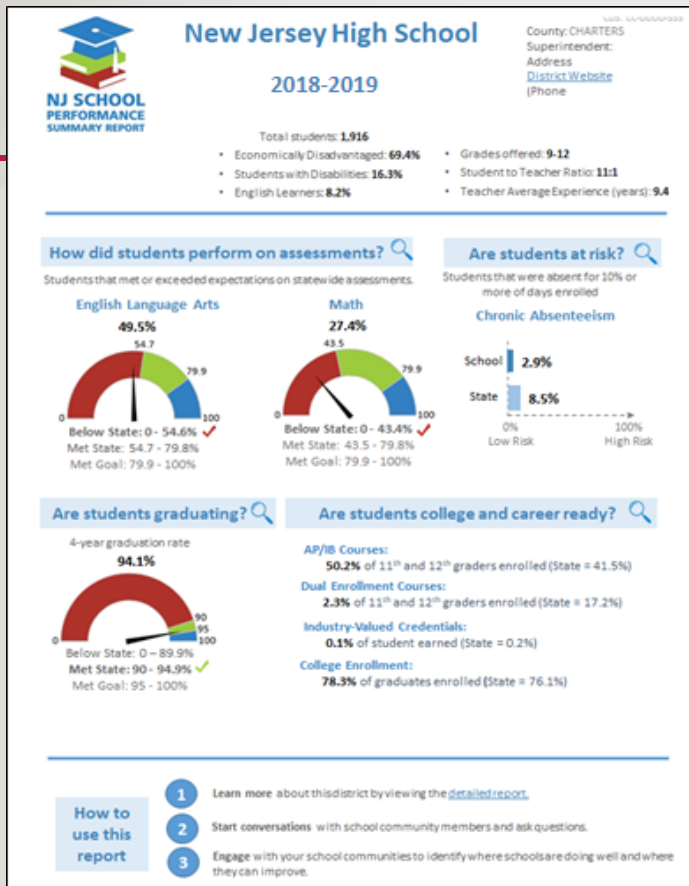
Videos and Other Resources

Data Privacy Rules (FERPA)

Take our Feedback Survey

Download the Data

SUMMARY PERFORMANCE REPORTS



WHAT KINDS OF INFORMATION DO THE SCHOOL PERFORMANCE REPORTS INCLUDE?

The New Jersey School Performance Reports contain hundreds of data points about schools and districts across New Jersey including:

- ✓ School and district overviews
- ✓ Demographic information
- ✓ Student growth
- ✓ Academic achievement
- ✓ College and career readiness
- ✓ Graduation and postsecondary information
- ✓ School climate and environment
- ✓ Staff information
- ✓ School Accountability
- ✓ School and district narrative information

NEW DATA ADDED TO THE FULL REPORTS

NJDOE added several new data elements to the 2018-19 School Performance Reports based on requests received during stakeholder engagement, federal reporting requirements, and the goal of promoting equity and progress:

- Participation in Computer Science and Information Technology courses
- School-level per-pupil expenditures
- Additional student group data for student growth, chronic absenteeism, graduation rates, and career and technical education program participation
- Three-year progress data for student growth, proficiency, and graduation rates

PROGRESS ON ACCOUNTABILITY INDICATORS: 2016-17 TO 2018-19

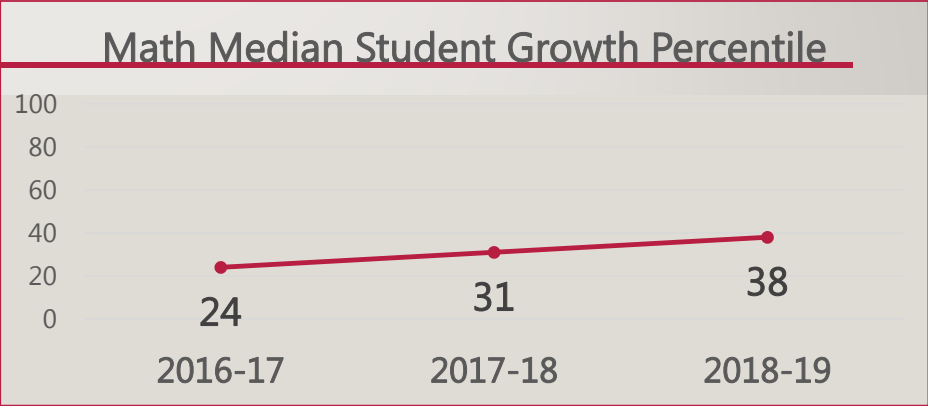
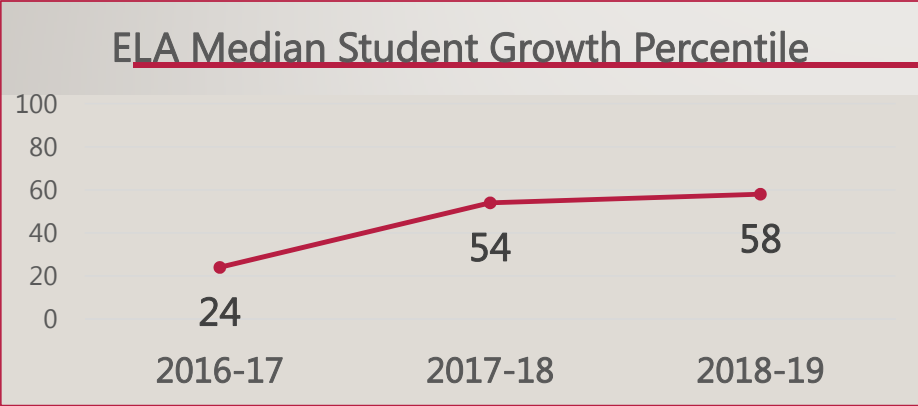
Data Measure	2016-17	2017-18	2018-19
ELA Proficiency	26% (Not Met)	44% (Not Met)	53% (Not Met)
Math Proficiency	24% (Not Met)	29% (Not Met)	31% (Not Met)
ELA Growth	21% (Not Met)	53% (Met)	58% (Met)
Math Growth	24% (Not Met)	31% (Not Met)	38% (Not Met)
Chronic Absenteeism	8% (Met)	6% (Met)	6% (Met)

STUDENT GROWTH (1 OF 2)

Each student gets a **student growth percentile (SGP)** from 1 to 99 for English (4th to 8th grade) and Mathematics (4th to 7th grade) that explains their progress compared to students who had similar test scores in the past (“academic peers”). An SGP between 35 and 65 is considered “typical”.

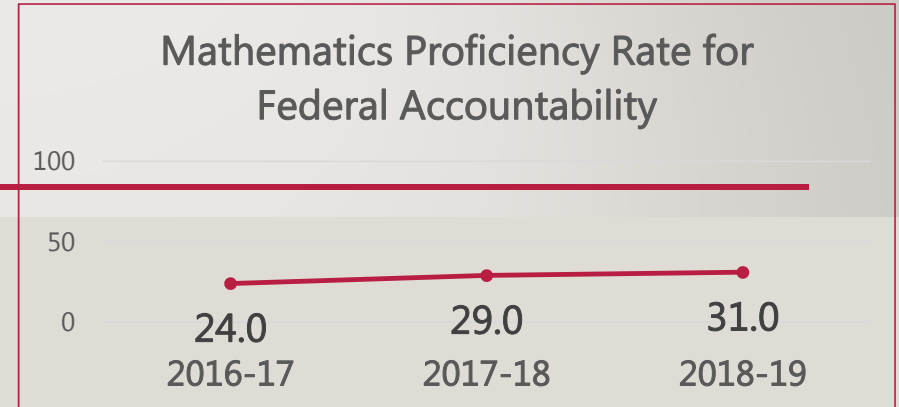
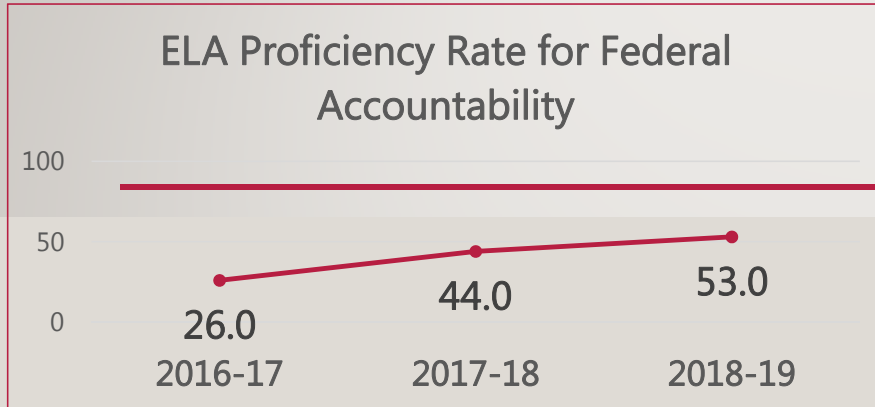
If the student growth percentiles for all students in a group (for example a school, a district, a student group, or a grade level), are ordered from smallest to largest, the **median student growth percentile (mSGP)** for that group is the percentile in the middle of the list. NJDOE’s standard for school and district accountability purposes is an mSGP of at least 40.

STUDENT GROWTH (2 OF 2)



Performance	ELA 2016-17	ELA 2017-18	ELA 2018-19	Math 2016-17	Math 2017-18	Math 2018-19
Median Student Growth Percentile	21% (Not Met)	54% (Met)	58% (Met)	24% (Not Met)	31% (Not Met)	38% (Not Met)
Statewide Median Student Growth Percentile	50	50	50	50	50	50

STATEWIDE ASSESSMENT PROFICIENCY

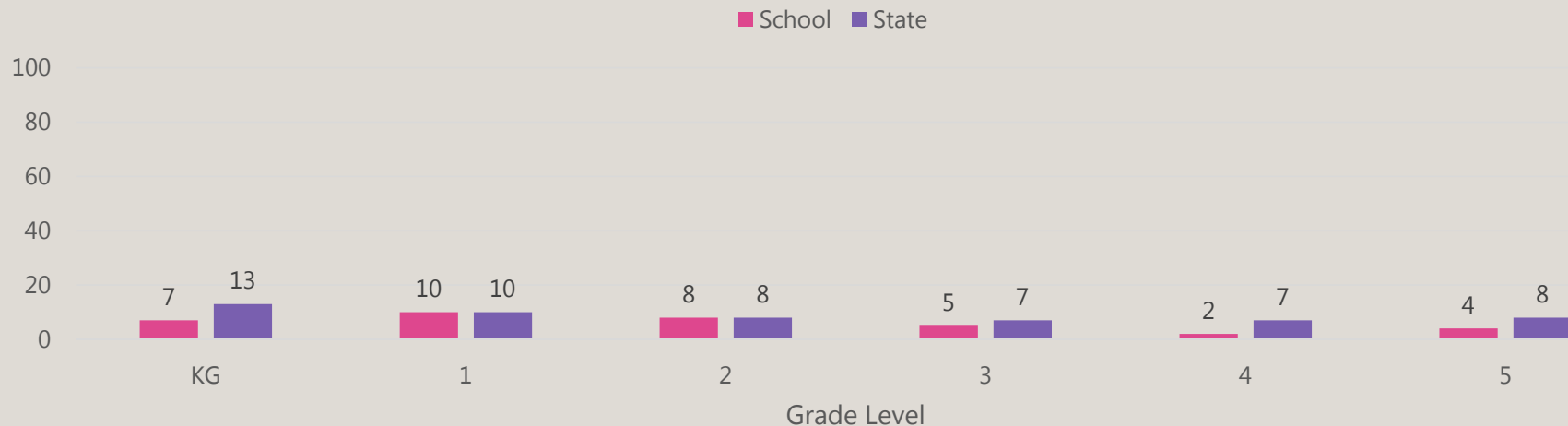


Performance	ELA 2016-17	ELA 2017-18	ELA 2018-19	Math 2016-17	Math 2017-18	Math 2018-19
Participation	100% (Met)	100% (Met)	100% (Met)	100% (Met)	100% (Met)	100% (Met)
Proficiency Rate	26% (Not Met)	44% (Not Met)	53% (Met with confidence interval)	24% (Not Met)	29% (Not Met)	31% (Not Met)
Statewide Proficiency	54.9	56.7	57.9	43.5	45.0	44.5

CHRONIC ABSENTEEISM

Student absences provide important information about a school's culture and climate. Research shows that absences impact a student's ability to succeed in school. Chronic absenteeism is defined as being absent for 10% or more of the days enrolled during the school year. A student who is not present for any reason, whether excused, unexcused, or for disciplinary action, is considered absent unless permitted by state statute or regulations.

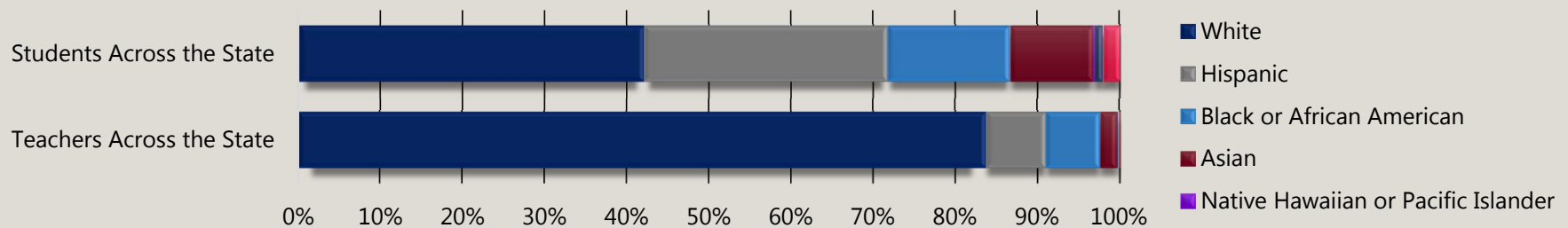
Chronic Absenteeism by Grade Level



TEACHER DEMOGRAPHIC INFORMATION (1 OF 2)

Do the students in our classrooms have the opportunity to be led by diverse teachers?
Teacher diversity improves outcomes for all students.

Teachers and Students by Demographic Information – State Level

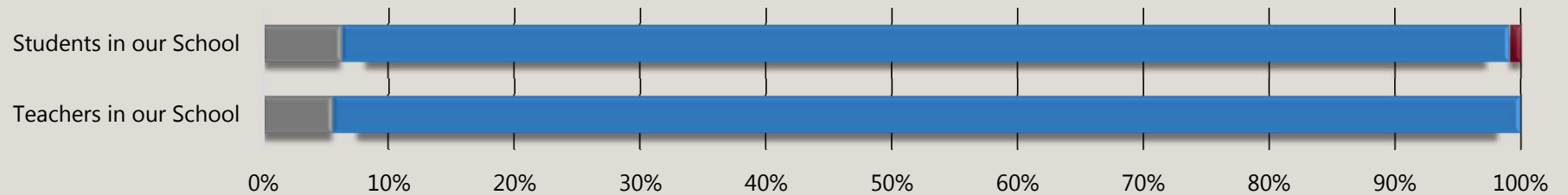


Race	Teachers Across the State	Students Across the State
White	83.6	42.4%
Hispanic	7.3%	29.9%
Black or African American	6.6%	15.0%
Asian	2.0%	10.2%
Native Hawaiian or Pacific Islander	0.1%	0.2%
American Indian or Alaska Native	0.1%	0.1%
Two or More Races	0.2%	2.1%

TEACHER DEMOGRAPHIC INFORMATION (2 OF 2)

Do the students in our classrooms have the opportunity to be led by diverse teachers?
Teacher diversity improves outcomes for all students.

Teachers and Students by Demographic Information – Our School



	Teachers in our School	Students in our School
■ White	0.0%	0.0%
■ Hispanic	5.6%	6.3%
■ Black or African American	94.4%	92.6%
■ Asian	0.0%	0.9%
■ Native Hawaiian or Pacific Islander	0.0%	0.0%
■ American Indian or Alaska Native	0.0%	0.0%
■ Two or More Races	0.0%	0.0%

STUDENT SAFETY IN THE DISTRICT

NARRATIVE INFORMATION ON STUDENT SAFETY

VIOLENCE, VANDALISM, HIB, AND SUBSTANCE OFFENSES

This table shows the number of incidents reported by type. A single incident may be counted under multiple incident types. The total unique incidents row provides an unduplicated count of incidents. The last row shows the rate of incidents for every 100 students enrolled.

Incident Type	Number of Incidents: District	Number of Incidents: State
Violence	0	12,381
Vandalism	0	1,770
Weapons	0	924
Substances	0	6,234
Harassment, Intimidation, Bullying (HIB)	1	7,183
Total Unique Incidents	1	28,121
Incidents Per 100 Students Enrolled	0.28	2.00

STUDENT SUPPORTS AND SERVICES

NARRATIVE INFORMATION ON STUDENT SUPPORTS AND SERVICES

STUDENT AND STAFF RATIOS

Student Support and Services provides Occupational and Speech Therapy, Counseling, support from a Special Education Teacher or Teacher Assistant, accommodations such as: In-class and Pull-out support, Extended Testing Time, and a quiet testing area for students. When students are struggling, they are referred to the I&RS team. Interventions are provided to the teachers. Some examples of interventions used are parent meetings, homework notebooks/agenda, additional help, small group instruction, Title I services, one-on-one instruction, and the use of supplemental programs (Moby Max, Pearson Realize, and Funbrain). Students are referred to the Child Study Team and 504 committee when they experience severe learning, behavior, or health difficulties.

Category	District
Students to Teachers	20:1
Students to Administrators	176:1
Teachers to Administrators	9:1
Students to Librarian/Media Specialists	NA
Students to Nurses	351:1
Students to Counselors	351:1
Students to Child Study Team	351:1

QUESTIONS?

See the NJDOE School Performance Reports
Administrator, Educator, and Parent and Community
Member Guides

on

www.njschooldata.org

HOW CAN I GET INVOLVED?

- Reach out to your school and district to find out about opportunities for how parents, families, and educators will work together to improve their schools.
- Schools and districts are required to engage with parents, families, educators, and community members throughout the year to assess needs related to the areas of weakness, identify strategies and resources that can impact improvement, create an improvement plan and timeline for completion.
- See NJDOE's Stakeholder Engagement Guide (<http://bit.ly/njengage>) for detailed descriptions of these requirements.

HAVE FEEDBACK OR QUESTIONS?

- Additional resources are available at: www.njschooldata.org
- Visit our district website for updates: www.burchcharterschool.org
- Email the district: jwhite@burchcharterschool.org
- Take the NJDOE School Performance Reports feedback survey:
<https://www.surveymonkey.com/r/201819SPR>
- Visit the NJDOE website at: www.nj.gov/education
- Email the NJDOE: reportcard@doe.nj.gov