

BURCH CHARTER SCHOOL OF EXCELLENCE

Data Review Start Strong, NWEA MAP & iReady

2022-2023 Fall Presentation

Mr. Simmons, Interim Chief School Administrator

Dr. Kemp, Vice Principal (Math and Science)

Mrs. Allbright, Vice Principal (English Language Arts and Social Studies)

Agenda

- NWEA MAP DATA
 - PERFORMANCE
 - GROWTH
 - COMPARISON OF ALL STUDENTS WITH STUDENTS ENROLLED IN SUMMER ENRICHMENT
- START STRONG ASSESSMENT DATA
- NJSLA Scores Revisited

Burch Charter School of Excellence

SY 2022 – 2023 Fall Comparison

Measures of Academic Progress (MAP)

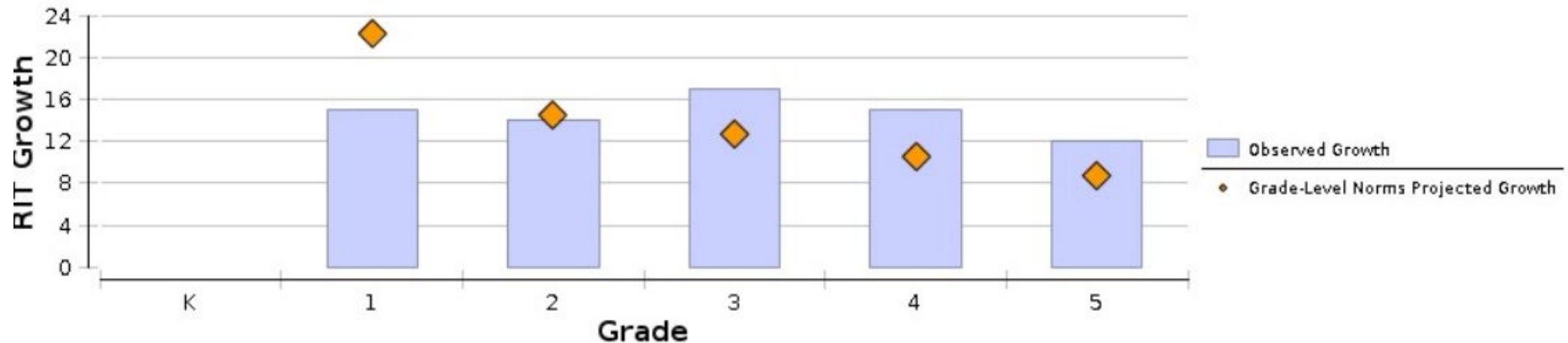
Mathematics on Grade Level

Grade	% On Grade Level SY 2021-22	% On Grade Level SY 2022-23
Kindergarten	30%	49%
First	36%	30%
Second	37%	30%
Third	25%	46%
Fourth	22%	38%
Fifth	21%	33%

Fall to Fall Growth SY 2021-2022 on Mathematics MAP

Grade (Fall 2022)	Total Number of Growth Events†	Comparison Periods							Growth Evaluated Against							
		Fall 2021			Fall 2022			Growth		Grade-Level Norms			Student Norms			
		Mean RIT Score	Standard Deviation	Achievement Percentile	Mean RIT Score	Standard Deviation	Achievement Percentile	Observed Growth	Observed Growth SE	Projected School Growth	School Conditional Growth Index	School Conditional Growth Percentile	Number of Students With Growth Projections	Number of Students Who Met Their Growth Projection	Percentage of Students Who Met Growth Projection	Student Median Conditional Growth Percentile
	0	**			**			**					**			
	37	134.9	10.3	20	150.0	14.2	6	15	1.7	22.3	-2.55	1	37	10	27	18
	46	155.2	13.3	20	168.9	13.6	17	14	1.3	14.5	-0.33	37	46	22	48	45
	44	169.1	12.4	15	185.6	12.4	35	17	1.0	12.6	2.24	99	44	31	70	69
	43	180.3	11.7	9	195.1	13.8	27	15	1.3	10.6	2.77	99	43	29	67	76
	42	190.1	10.3	8	202.3	13.0	19	12	1.1	8.7	2.62	99	42	33	79	75

Math: Math K-12



Burch Charter School of Excellence

SY 2022 – 2023 Fall Comparison

Measures of Academic Progress (MAP)

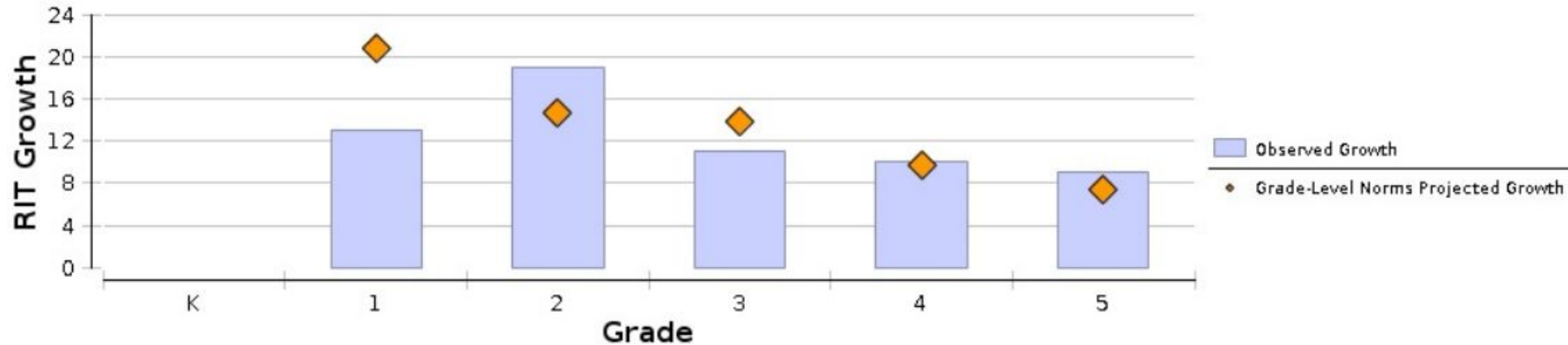
Reading on Grade Level

Grade	% on Grade Level Sy 2021-22	% on Grade Level Sy 2022-23
Kindergarten	29%	47%
First	33%	33%
Second	39%	39%
Third	51%	35%
Fourth	43%	50%
Fifth	40%	45%

Fall to Fall Growth SY 2021-2022 on ELA MAP

Grade (Fall 2022)	Total Number of Growth Events	Comparison Periods						Growth Evaluated Against								
		Fall 2021			Fall 2022			Growth		Grade-Level Norms			Student Norms			
		Mean RIT Score	Standard Deviation	Achievement Percentile	Mean RIT Score	Standard Deviation	Achievement Percentile	Observed Growth	Observed Growth SE	Projected School Growth	School Conditional Growth Index	School Conditional Growth Percentile	Number of Students With Growth Projections	Number of Students Who Met Their Growth Projection	Percentage of Students Who Met Growth Projection	Student Median Condition: Growth Percentile
K	0	**			**			**					**			
1	38	132.7	7.9	23	145.6	16.8	4	13	2.1	20.8	-2.60	1	38	11	29	12
2	45	150.1	13.6	14	168.6	15.6	32	19	2.0	14.6	1.62	95	45	24	53	54
3	47	171.7	16.8	46	183.0	17.2	34	11	1.7	13.9	-1.19	12	47	21	45	39
4	45	184.2	16.6	37	193.7	15.4	36	10	1.4	9.8	-0.16	44	45	20	44	44
5	42	192.2	14.9	27	201.1	14.4	34	9	1.4	7.4	1.05	85	42	25	60	54

Language Arts: Reading

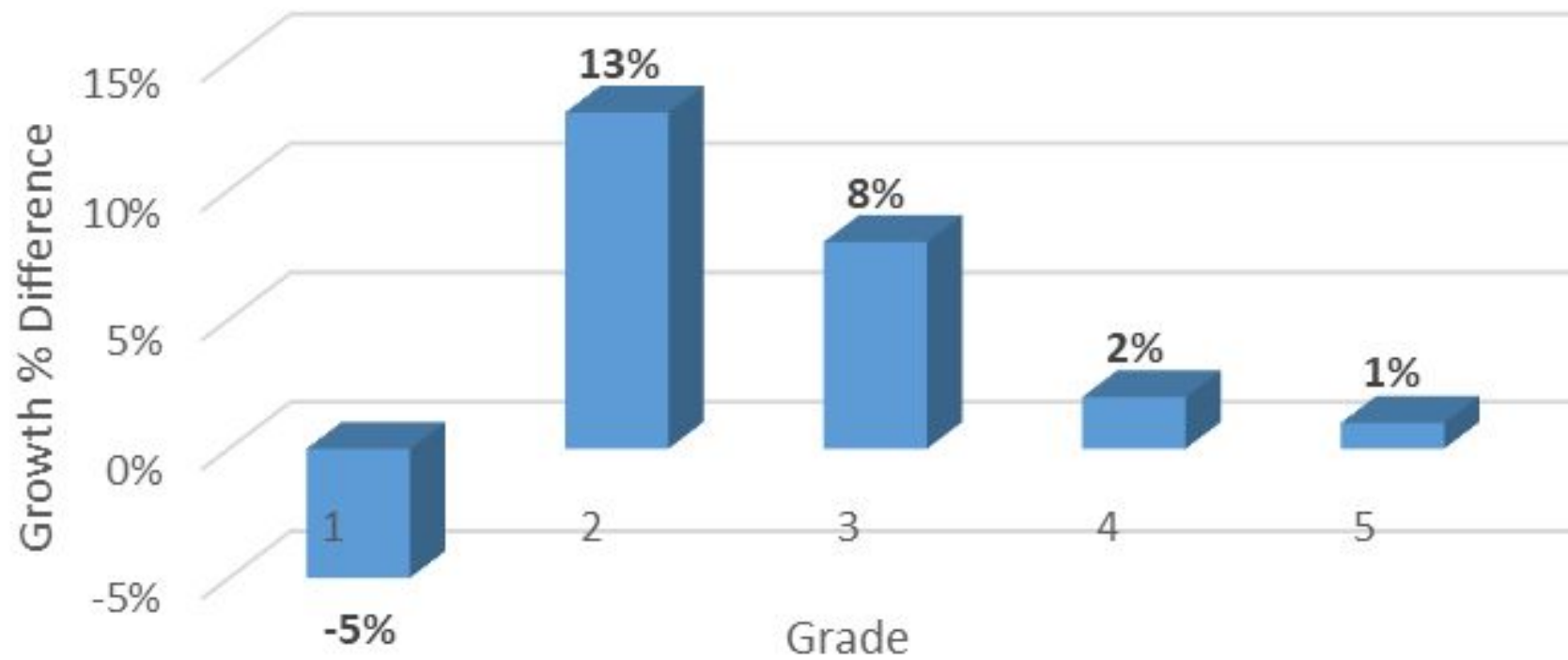


Burch Charter School of Excellence

Mathematics MAP Fall SY 2022 Data Comparison Summer School vs Non Summer School

Grade	BCSE Math Performance Percentile Mean	BCSE Growth Percentile Mean	Summer Scholars Performance Percentile Mean	Summer Scholars Growth Percentile Mean
1	6	18	7	13
2	17	45	31	58
3	35	69	30	77
4	27	76	37	78
5	19	75	27	76

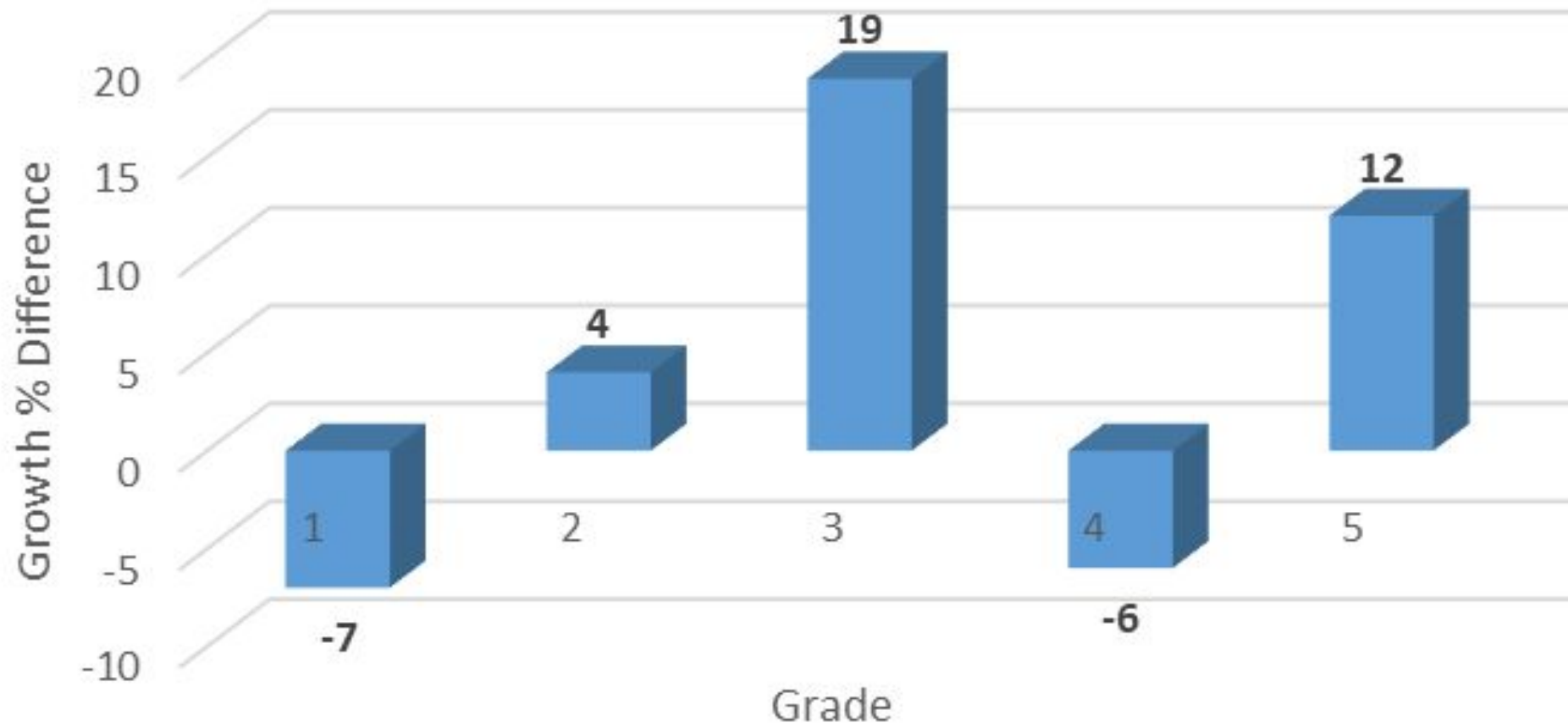
Growth % Difference between Summer School Scholars and Non-summer School Scholars on NWEA Mathematics Fall 2022 Assessment



ELA MAP Fall SY 2022 Data Comparison Summer School vs Non Summer School

Grade	BCSE Math Performance Percentile Mean	BCSE Growth Percentile Mean	Summer Scholars Performance Percentile Mean	Summer Scholars Growth Percentile Mean
1	4	12	9	5
2	32	54	28	58
3	34	39	30	58
4	36	44	36	38
5	34	54	26	66

Summer School vs Non Summer School Students on ELA MAP Fall 2022 Assessment



Start Strong Fall Assessment

1. ELA and Mathematics
2. Score Report Scale
 - Strong Support May be Needed
 - Some Support May be Needed
 - Less Support May be Needed

Start Strong 2021-2022

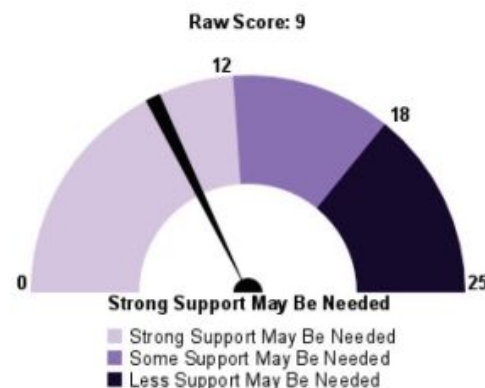
Preliminary Student Report

Kate J School (7777999360)

Test Details

Test Name Grade 06 Science	Grade 06	Date of Birth 01/01/2005
Test Date 09/03/2020	Testing District	Testing School PV BE NONSCHOOL 810 (500800-810)

How Did Kate Perform Overall?



Science Assessment Report, 2021-2022

Students at this level demonstrated minimal understanding of the Elementary School scientific concepts and practices in the three tested content domains: Earth & Space, Life, and Physical Science.

For detailed information about what students at this level are likely able to do and the topics in which they would likely need more support, please visit [here](#)

How Did Kate Perform on the Reporting Concepts?

Reporting Concepts	Score	Score Range
Investigating Practices	3	0-9
Sensemaking Practices	3	0-10
Critiquing Practices	3	0-6
Earth & Space Science	3	0-8
Life Science	3	0-7
Physical Science	3	0-10

The Start Strong Assessment measures the [New Jersey Student Learning Standards - Science \(NJSL-S\)](https://www.nj.gov/education/aps/cccs/science/). The NJSL-S are the foundation for interactive science instruction that promotes analysis and interpretation of data, critical thinking, problem solving, and connections across scientific disciplines.

For more information, please refer to the NJ Start Strong Score Interpretation Guide in the Start Strong section at the [NJSLA](#).

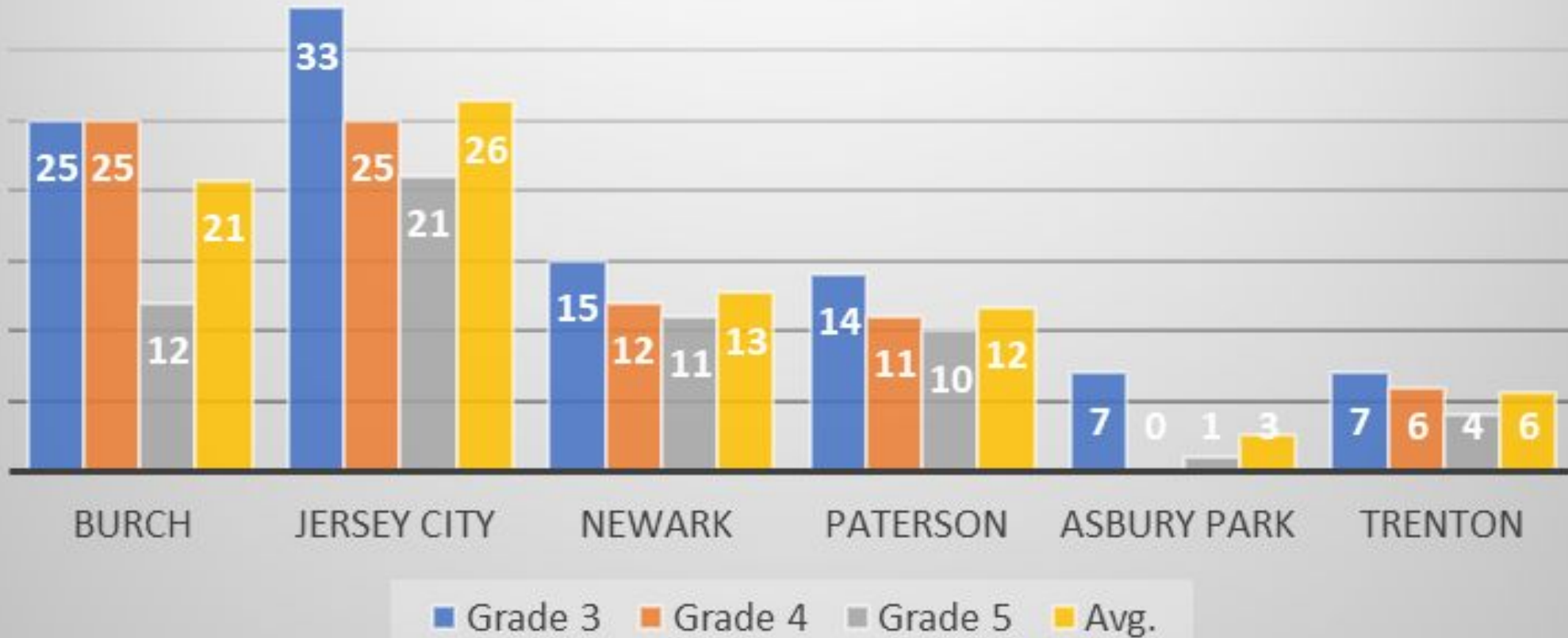
Start Strong Mathematics Assessment Fall 2021 vs Fall 2022

Grade	Strong Support May Be Needed		Some Support May Be Needed		Less Support May Be Needed	
	2021	2022	2021	2022	2021	2022
4	76%	41%	19%	39%	5%	41%
5	66%	68%	25%	12%	9%	20%
Total	72%	55%	22%	26%	7%	31%

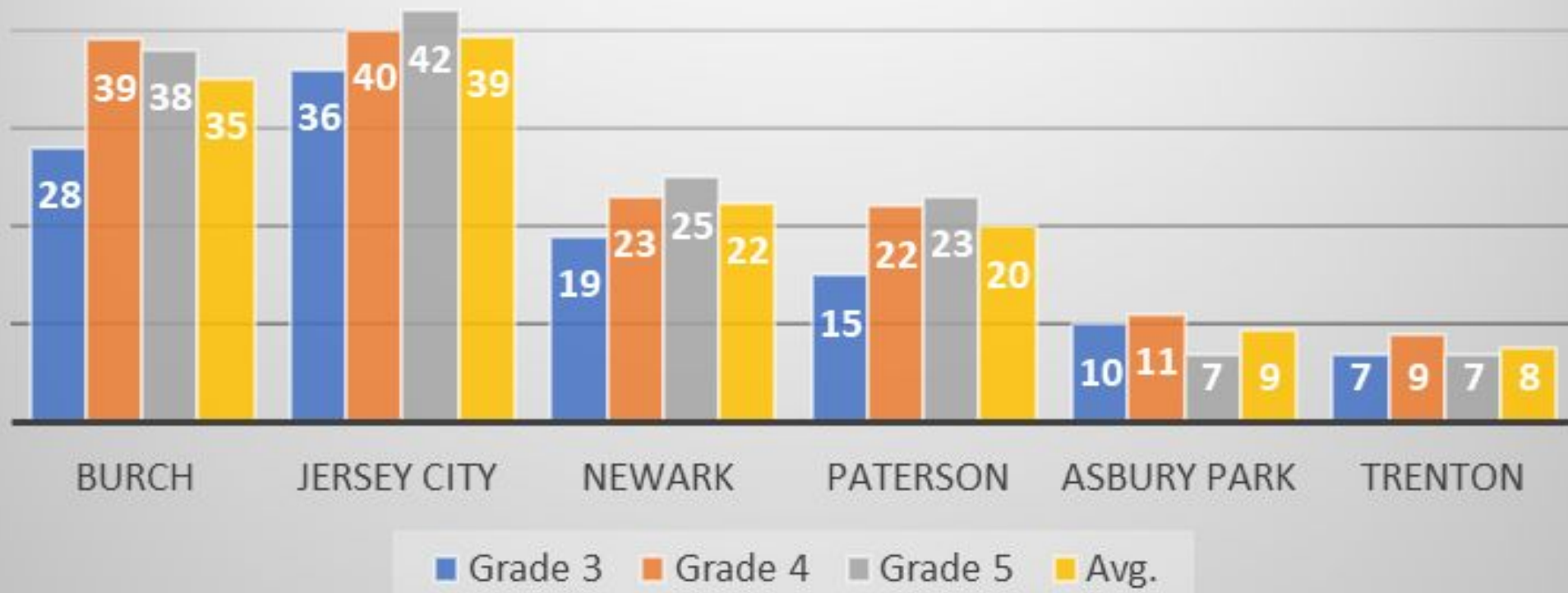
Start Strong ELA Assessment Fall 2021 vs Fall 2022

Grade	Strong Support May Be Needed		Some Support May Be Needed		Less Support May Be Needed	
	Fall 2021	Fall 2022	Fall 2021	Fall 2022	Fall 2021	Fall 2022
4	48%	42%	26%	26%	26%	30%
5	30%	28%	40%	32%	30%	40%
Total	42%	35%	34%	29%	28%	35%

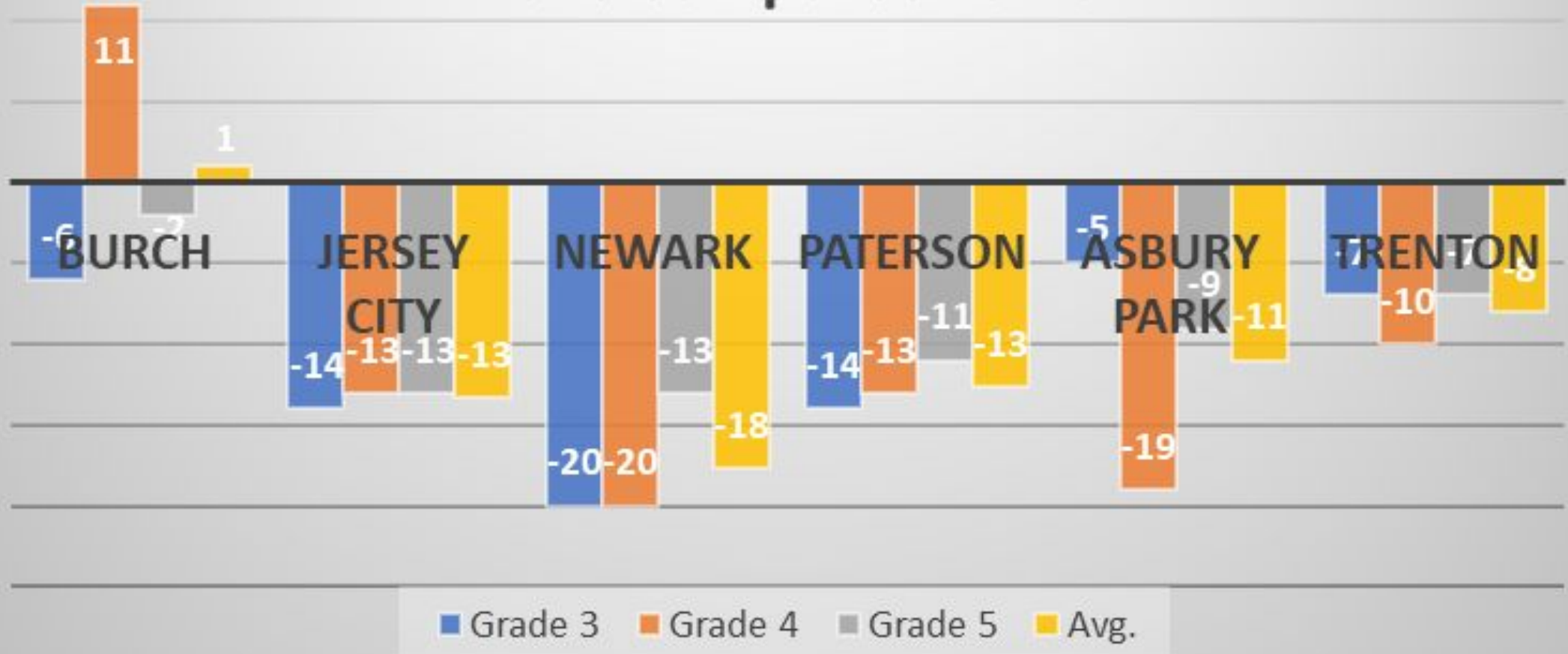
Comparison of The 2022 NJSLA Math Scores across NJ School Districts



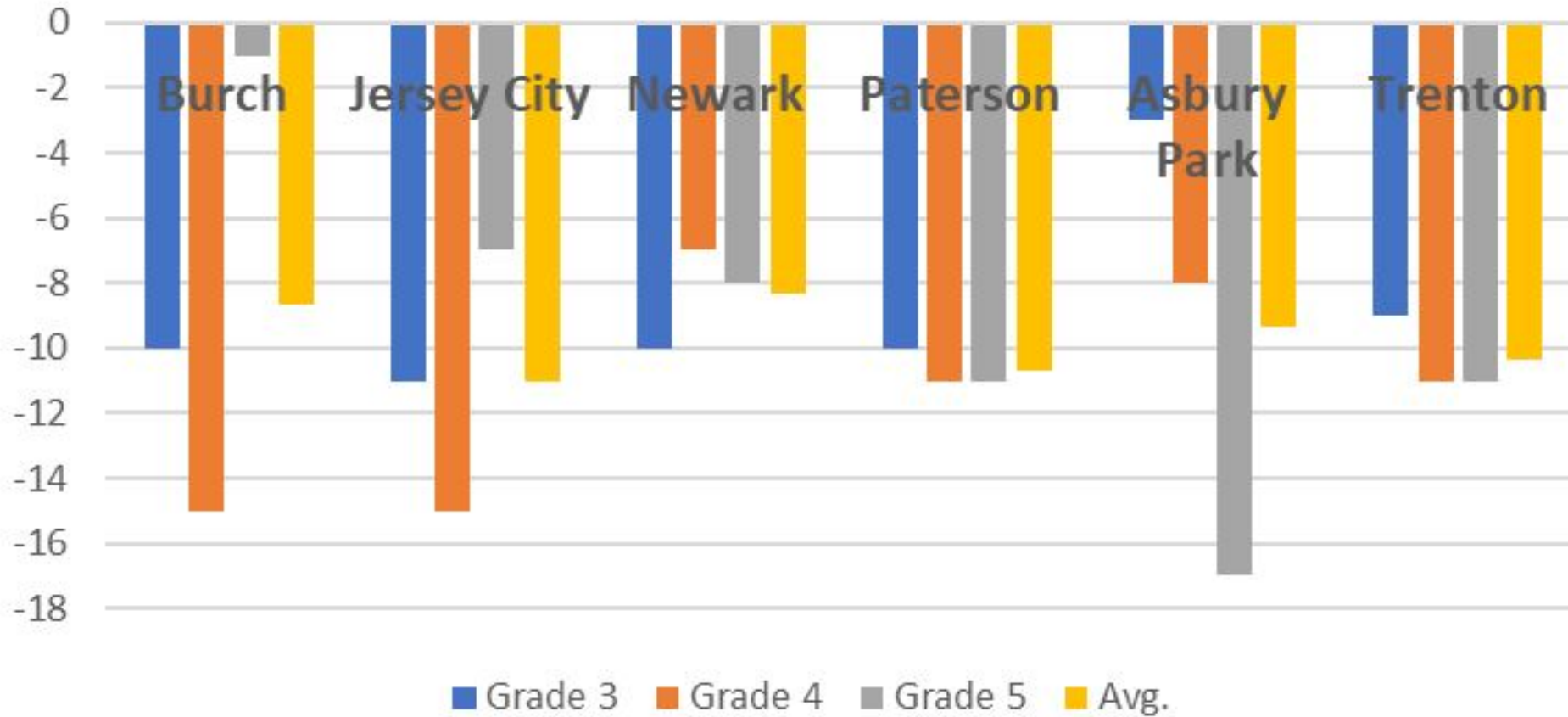
Comparison of the 2022 NJSLA ELA Scores across NJ School Districts



Pandemic Loss across NJ Largest School Districts on NJSLA Mathematics 2018 compared to 2022



Pandemic Loss across NJ Largest School Districts on NJSLA ELA 2018 & 2022 Comparison



Strategies to Address Academics

- ▶ RTI Model
- ▶ Academic Interventionist
- ▶ Reading Specialist
- ▶ ELA and Math Leads
- ▶ Designated ELA and Mathematics VPs
- ▶ Saturday Program
- ▶ After school Program
- ▶ Summer program
- ▶ Math and Reading Workshop Model
- ▶ Adaptive Learning Programs: I-Ready & MobyMax
- ▶ Seton Hall University Coaching